

CNB 88

CNB

SOLARIS YACHTS SRL
Via Curiel, 49
33 051 Aquileia UD Italy
Tél. : 39 (0)431 91304
cnb@cnbyachts.com

A new exciting journey for CNB !

After more than 30 years of experience and sailboats that have marked the world of sailing, CNB is returning to its roots by joining Solaris.

This shipyard shares the same ambition, that of making unique boats resulting from rare know-how combining craftsmanship and technology.

No change of course, the identity of CNB remains, as evidenced by the CNB 88, which incorporates all the attributes of its predecessors: seaworthy, elegant and timeless.

This alliance between these two legendary brands will make it possible to offer ever more pleasure in living the sea.



The new flagship

“

Heir to the tradition of one-offs and to the CNB 76, the CNB 88 takes up the incredible functionality of the 76 by adding more volume and refinements. The purpose of this sailboat is to offer large accommodation capacity thanks to a spacious owner's cabin and three equal-sized guest cabins. The crew also benefits from the generous volume of the aft section with 2 double cabins. Faithful to the marine qualities of CNBs, her balanced hull and great stiffness to the canvas guarantee comfort and performance.

VINCENT ARNAUD

CNB88 EXTERIOR

PHILIPPE BRIAND YACHT DESIGN



With the CNB 88, we wanted to create a safe, fast and protective sailboat that makes you want to go far. 88' long, it is an ideal compromise between volume, absolute comfort and simplicity of the systems.

The CNB 88 is a real superyacht.

PHILIPPE BRIAND

A handwritten signature in dark blue ink that reads "PHILIPPE BRIAND". The signature is written in a cursive, slightly slanted style.







**A COCKPIT
FLOATING
IN THE AIR**

The geometry of the seats, the high backrests, the multiple storage compartments all make the cockpit as comfortable at anchor as when sailing.







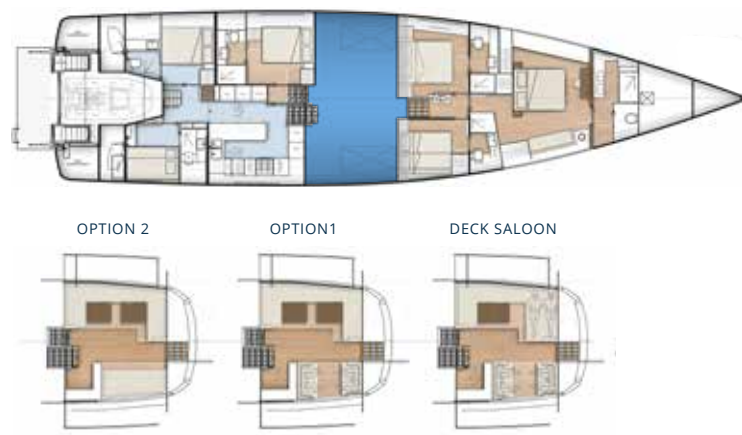
It was extremely exciting to have the opportunity to work on the future CNB flagship, with Philippe Briand, in a new context. Without losing the spirit and style of the brand that contributes to its success, we designed a lighter, more contemporary interior. We wanted to bring more clarity, comfort and elegance with great care in the details of finish, treatment of woodwork. Here we have a boat that will be talked about in this exclusive world.

JEAN-MARC PIATON
CLÉMENT BERCAULT
RAPHAËL BONET

A handwritten signature in black ink, appearing to read 'Jean-Marc Piaton'.



THE SALOON

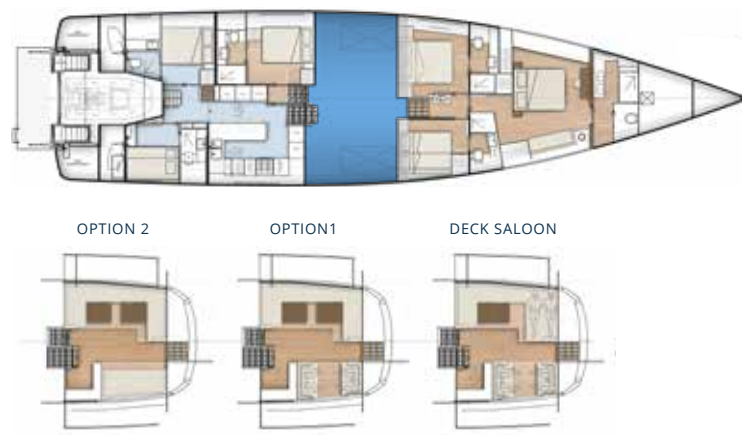


A BRIGHT SALOON

Seating at the perfect height for enjoying the panoramic view.



THE SALOON

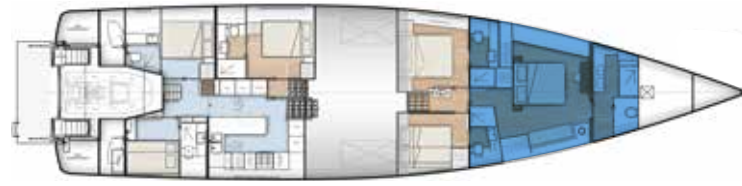


COMFORT AND SERENITY

*The subtle balance between materials.
A layout conducive to relaxation with
a bar and welcoming sofas.*



THE OWNER'S SUITE



OPTION

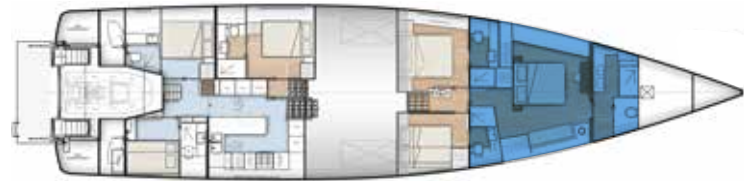


VOLUME AND REFINEMENT

A spacious and comfortable suite organized around a central bed and with a proper desk integrated in an elegant library.



THE OWNER'S SUITE

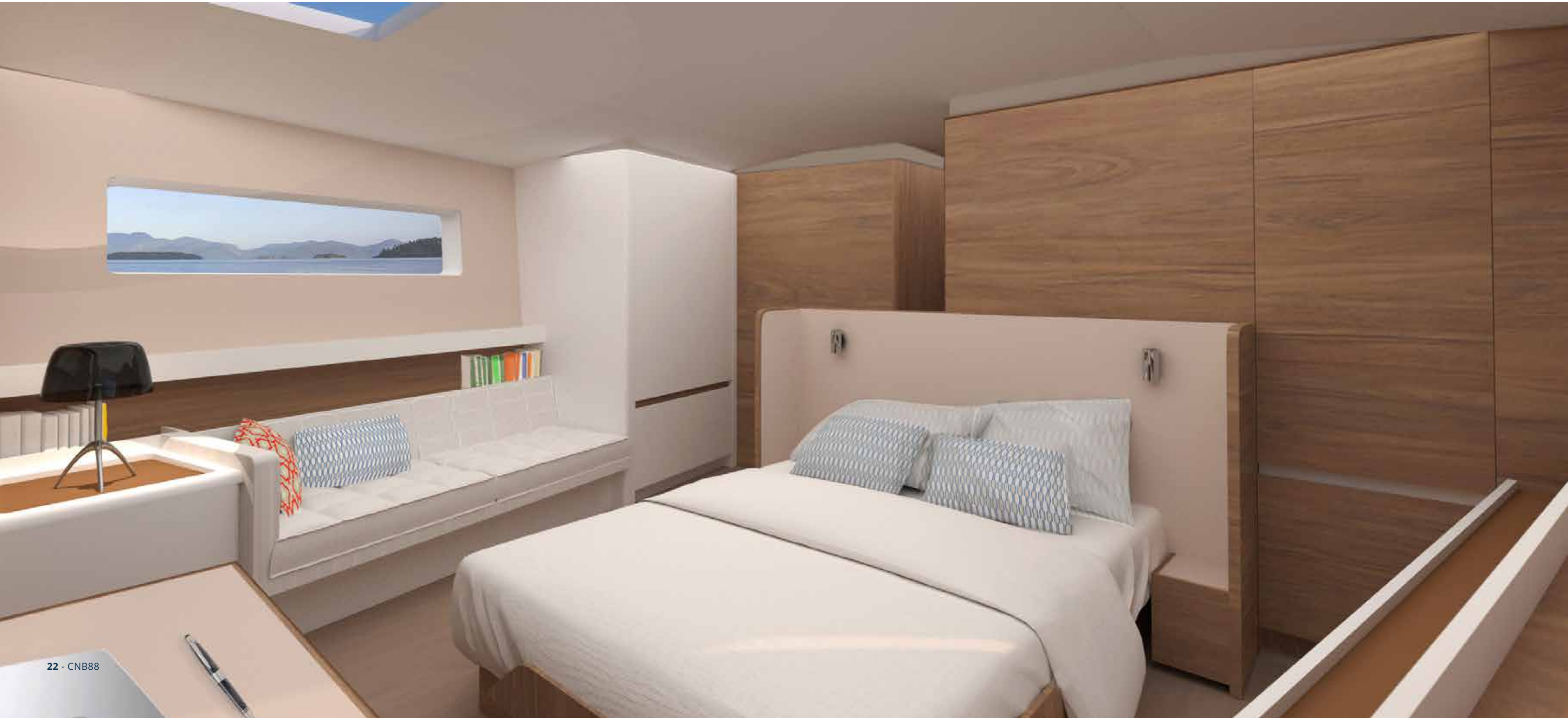


OPTION

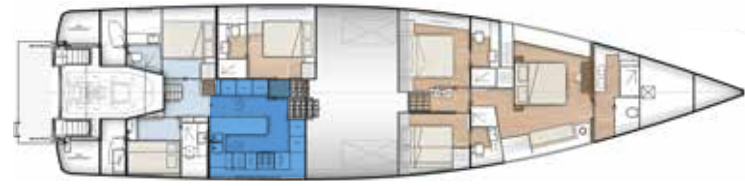


**VAST STORAGE SPACE
IN COMPLETE PRIVACY**

*Wardrobes at heights that maintain
a direct view of the cabin.*



THE GALLEY



OPTION

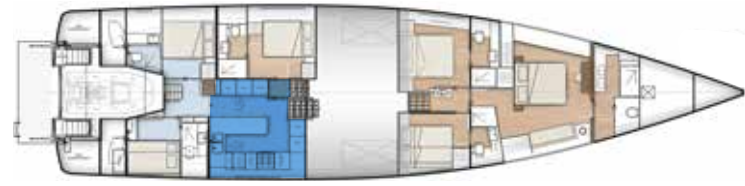


PROFESSIONAL GALLEY

*Functional and user-friendly,
a living space in its own right.*



THE GALLEY



OPTION

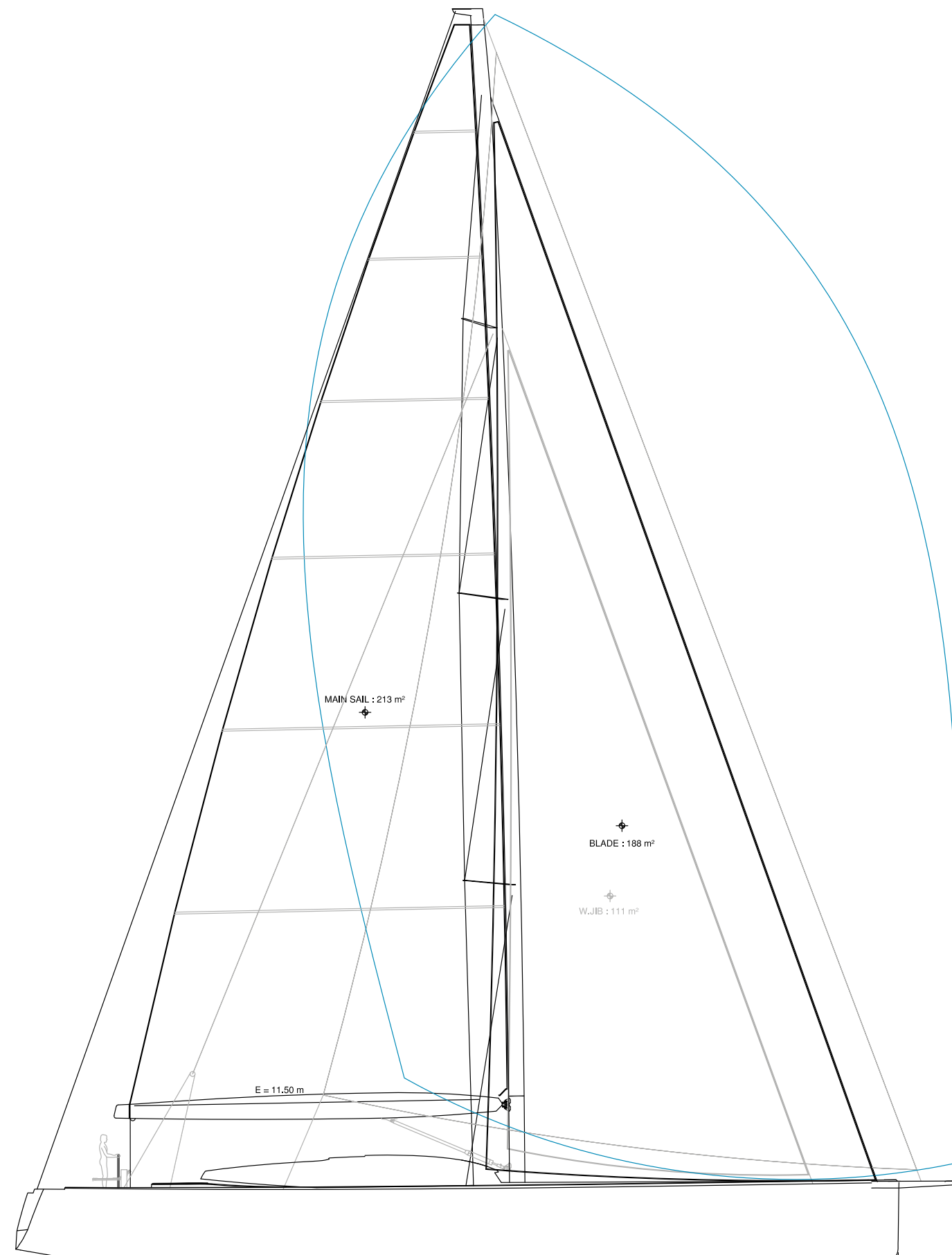


U-SHAPED GALLEY VERSION

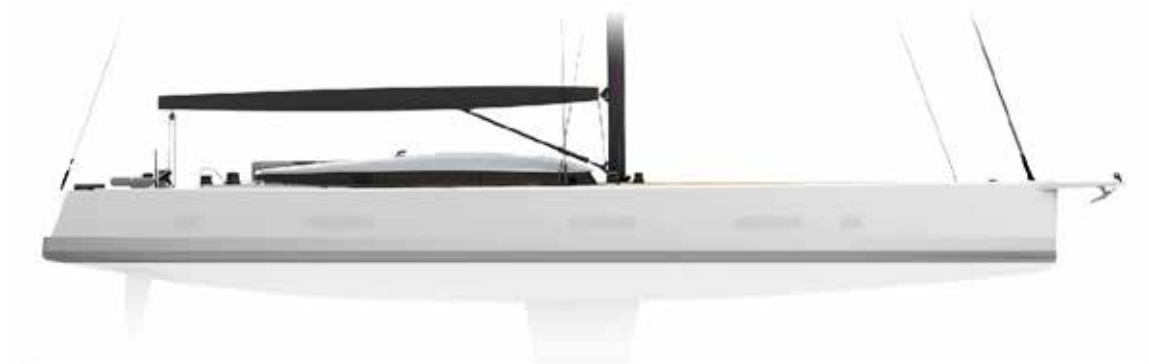
Spacious, elegant and functional under way, the galley is separated from the guest area and makes the connection with a real crew area. An optional relaxation area with the same equipment is available.



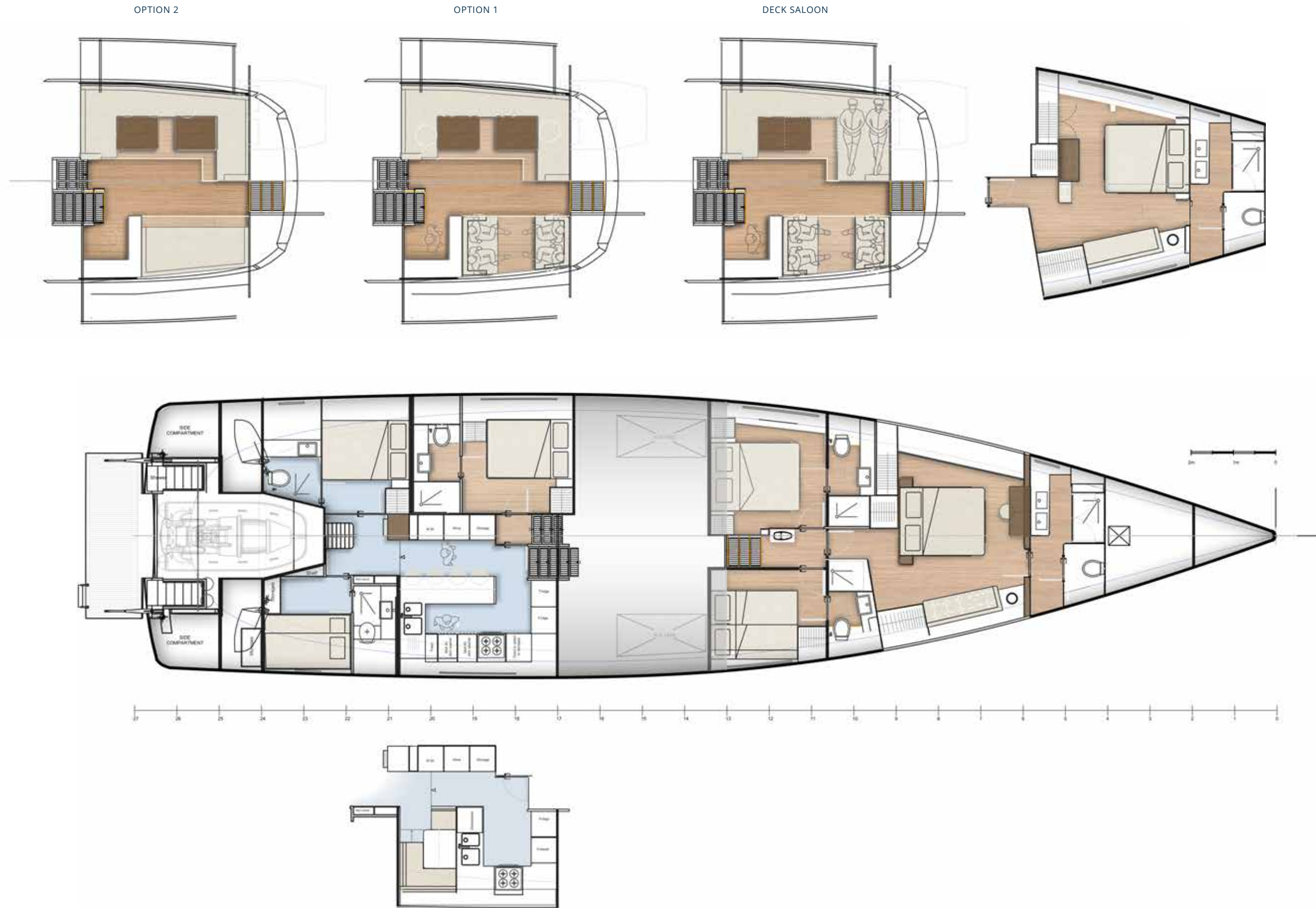
SPECIFICATIONS



- Naval architect Philippe Briand
- Interior design Piaton Yacht Design
- Load line length 23.99 m / 78'8"
- Length overall (with bow roller) 28.30 m / 92'8"
- Hull length 26.80 m / 87'9"
- Length with bowsprit 28.30 m / 92'8"
- Length @ waterline 24.70 m / 81'
- Maximum beam 6.75 m / 22.1'
- Draught (standard) 3.25 m / 10'7"
- Light displacement MSC (approx.) 58000 kg / 127 860 lbs
- Standard keel (approx.) 16200 kg / 35 700 lbs
- I 33.00 m / 108'3"
- J 10.70 m / 35'1"
- P 32.56 m / 106'8"
- E 11.50 m / 37'7"
- Air draught (excluding aerials) 37.95 m / 124'5"
- Fully battened mainsail area (approx.) 213 m² / 2292 ft²
- Furling genoa area (approx.) 188 m² / 2023 ft²
- Staysail area (approx.) 111 m² / 1194 ft²
- Asymetric spinnaker area (approx.) 590 m² / 6350 ft²
- Gennaker or Code 5 area (approx.) 490 m² / 5274 ft²
- Code 0 area (approx.) 280 m² / 3013 ft²
- Main engine VOLVO D4 225 HP @3500rpm
- Fresh water capacity 1800 L / 475 US gal
- Fuel capacity 3000 L / 792 US gal



LAYOUTS





This document is not contractual. The illustrations of the boat featured in this brochure may include optional equipment/accessories.

Conception : Piaton et Associés
Visuels 3D : Philippe Briand & Piaton Bercault Bonet
Images de synthèse : Absolute 2001

CNB
YACHT BUILDERS